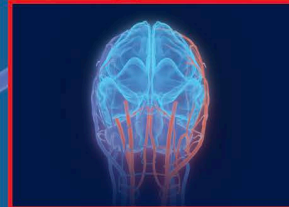
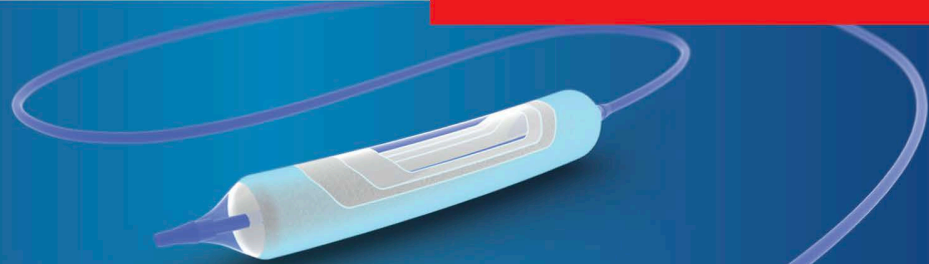
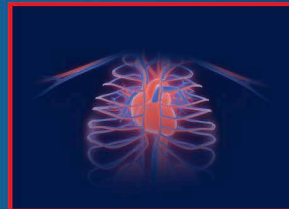


# ELUTAX "3"

THE INTELLIGENT DRUG COATED BALLOON



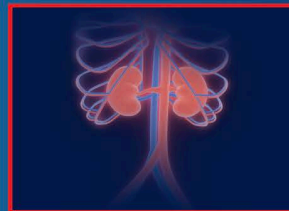
NEURO



CORONARY



DIALYSIS



CENTRAL



PERIPHERAL





# AR Baltic Medical

## THE DRUG COATING BALLOON COMPANY

**AR** Baltic Medical was among the first companies, which developed drug coated balloons from 2006.

ELUTAX "3" our third generation Balloon is the newest of its kind to enable a long term Drug release over months - with only one single inflation.

The especially developed release system offers a sustained Drug persistence at the lesion and is the key for healing.

The versatile drug coating enables us to coat different catheter platforms, therefore we are actually the only company, which offers a range of Drug eluting Balloons with a diameter of 1.5 mm to 14 mm and a length of 1 cm to 25 cm.

The particular homogeneous coating is one of many other reasons why the product can be used in the different vascular territories: arterial as well as venous; peripheral as well as central, and especially in the supra-aortic territories.



# TECHNOLOGY BACKGROUND

**Balloon platform:** Catheter produced in house

**Sizes:** length from 1 cm to 25 cm, diameter from 1,5 to 14 mm

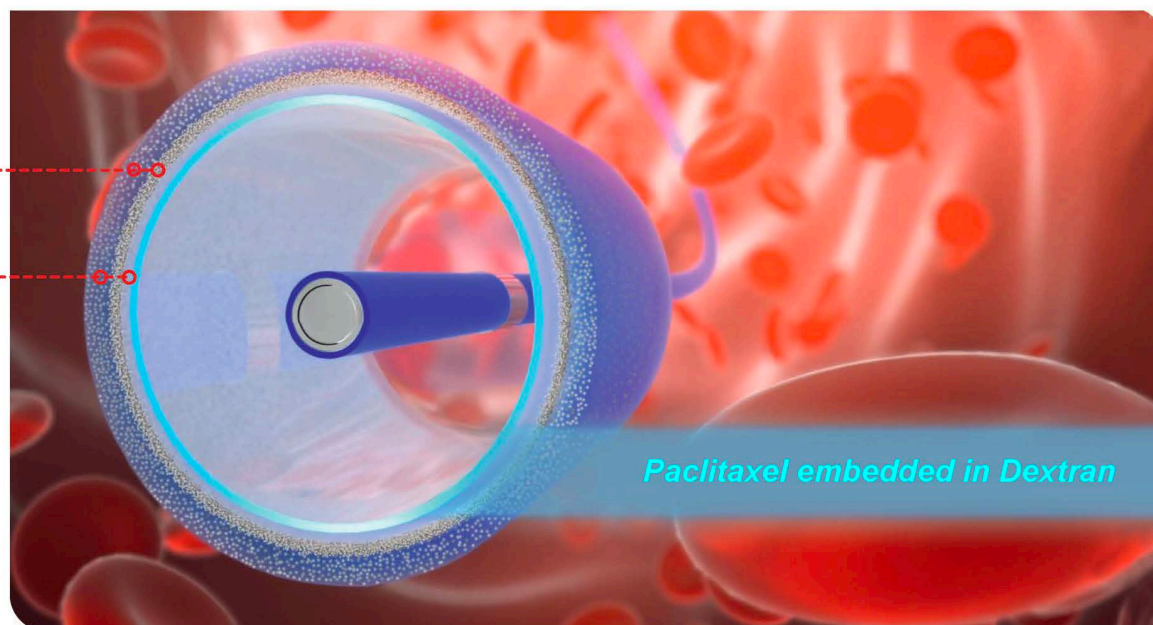
High flexible balloon catheter with low profile due to our Vortex Technology.

## Multi Purpose Drug Matrix

- Homogenous coating
- Even and Consistent coating of inflated Balloons
- Drug Matrix (3 Dimensional Dextran – Paclitaxel Formation)
- Balloon with 360 Degree coating coverage
- Minimal Drug lost during passage in the body
- Minimal Drug lost from the balloon surface during maneuver or inflation
- Reliable quantitative Drug deposition into the vessel wall
- Target deposition Modus TDM - Drug is only released at higher pressure and contact the vessel wall
- Long Lasting EFFECT -Drug concentration in the vessel wall (intima, media, adventitia) for several weeks
- No Drug “Chunk” spreading - during inflation

Paclitaxel  
Microcrystals

Dextran Gel



*Paclitaxel embedded in Dextran*

# DRUG MATRIX PACLITAXEL+DEXTRAN



Multifunctional Coating  
Dedicated: Dextran-Paclitaxel Formation

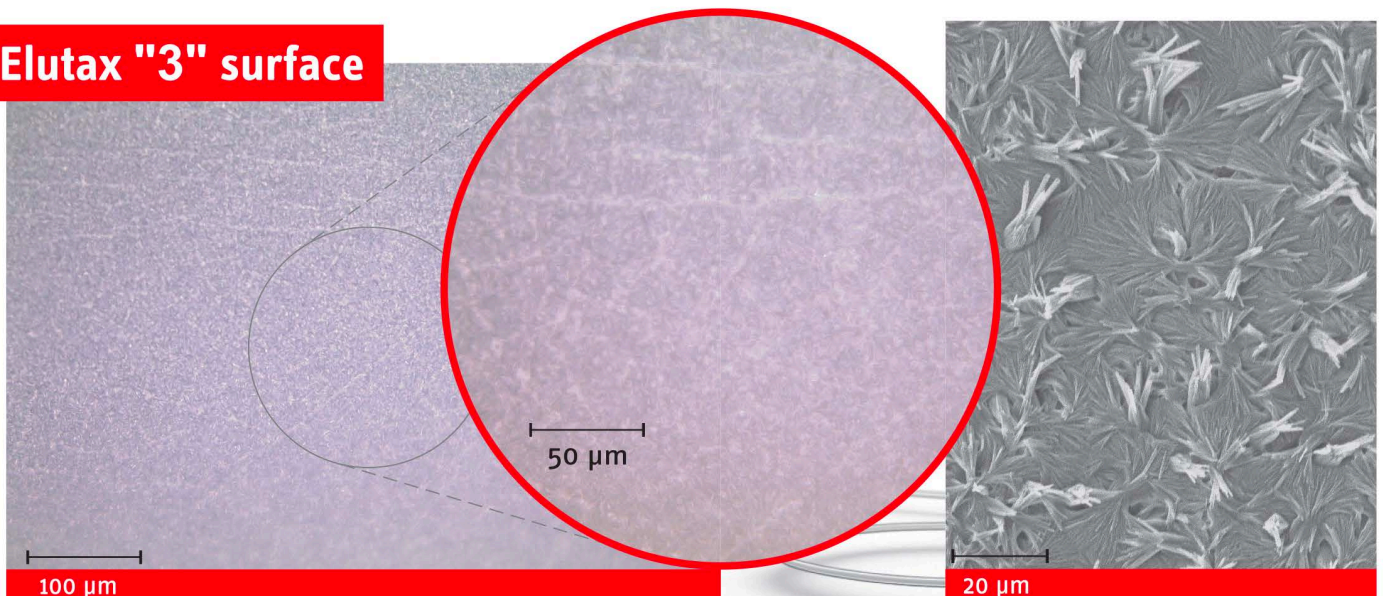
- 1. Seals the drug at the vessel
- 2. Therapeutic action time is longer
- + Better mechanical stability
- + Anti thrombogenic
- + Lesion protection
- + Reservoir Matrix
- + Local stability
- + Lowest wash off after deposition

“CONTROLLED HEALING OVER MONTHS”

## Paclitaxel Tissue levels of different Drug eluting Balloons over 30 days

Coronary PORCINE	Elutax "3"	Competitor A	Competitor B
uniform coating	yes	no	no
360 degree	yes	no	no
Drug Dose 1 hour	~ 250 $\mu\text{mol/ml}$	~ 200 $\mu\text{mol/ml}$	~ 200 $\mu\text{mol/ml}$
Drug Dose 7 days	~ 70 $\mu\text{mol/ml}$	~ 0 $\mu\text{mol/ml}$	~ 10 $\mu\text{mol/ml}$
Drug Dose 30 days	~5-10 $\mu\text{mol/ml}$	~0 $\mu\text{mol/ml}$	~0.1 $\mu\text{mol/ml}$
Drug lost during maneuver	max 5%	high	up to 30% every 10 sec.

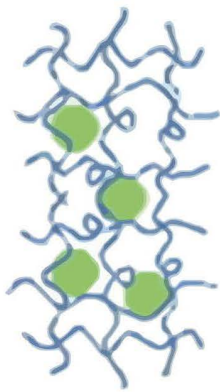
## Elutax "3" surface



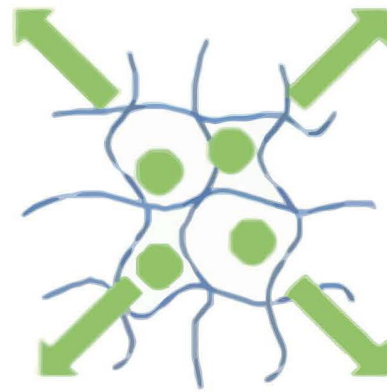
# SUSTAINED VALUE

## PRINCIPLE OF DRUG MAINTENANCE IN THE VESSEL WALL

### Mechanism of Hydrogel



**Paclitaxel** trapped in DEXTRAN structure. In this configuration the Drug is coated onto the balloon surface and pressed against the inner lumen of the vessel after inflation.



**Paclitaxel** Long-term diffusion out of DEXTRAN from the inner lumen into the vessel wall.

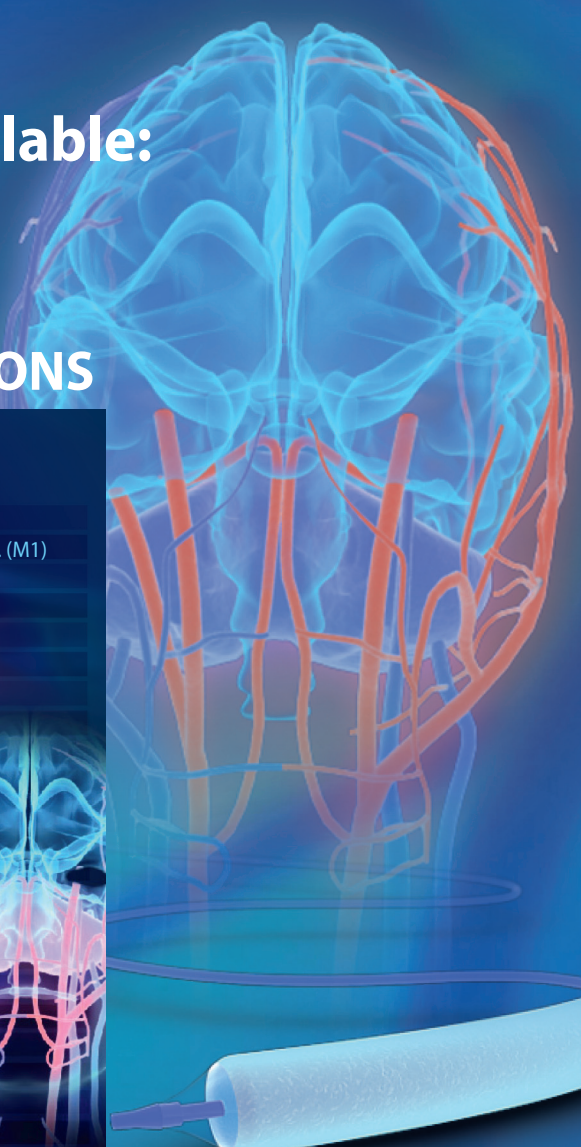
The special coating structure enables effective drug tissue levels up-to 60 days after intervention.

# ELUTAX "3"

# NEURO

## NEW sizes available:

### THE ONLY DRUG ELUTING BALLOON CERTIFIED FOR THE TREATMENT OF INTRA-CRANIAL AND CAROTID LESIONS



## NEURO

<b>Purpose:</b>	Supraaortic lesions
<b>Lesion location (if not too tortuous):</b>	carotid a., vertebral a., basilar a., middle cerebral a. (M1)
<b>Tip:</b>	flexible, sof0,017"
<b>MAX Catheter profile:</b>	less than 1 mm
<b>Catheter design:</b>	Rx
<b>Catheter material:</b>	Pebax/Nylon
<b>Usable catheter length:</b>	Minimum 144 cm and 155 cm
<b>GW length:</b>	Recommended 180-250 cm
<b>Max. recommended GW:</b>	0,014"
<b>Introducer sheath compatibility:</b>	4F
<b>Guiding catheter compatibility:</b>	5 F
<b>Balloon characteristic:</b>	semi compliant
<b>Balloon nominal diameter:</b>	1,5-6,0 mm
<b>Balloon nominal length:</b>	10-40 mm
<b>Balloon coating:</b>	3D-Dextran-Paclitaxel Matrix
<b>Nr. of folds:</b>	3
<b>Crossing profile:</b>	less than 1 mm
<b>Transition Zones:</b>	6
<b>Inflation time recommended:</b>	15 sec
<b>Nominal pressure:</b>	6 atm
<b>RBP:</b>	14 atm
<b>Need of predilatation:</b>	NO



**ORDER-CODE: N-ELUTAX"3"-XXXXX**  
**Extra-Long Shaft: N-ELUTAX-L**

## NEURO

length	40						
mm	10	13	15	20	25	30	40
1.50	10150	13150	15150	20150	25150	30150	40150
2.00	10200	13200	15200	20200	25200	30200	40200
2.25	10225	13225	15225	20225	25225	30225	40225
2.50	10250	13250	15250	20250	25250	30250	40250
2.75	10275	13275	15275	20275	25275	30275	40275
3.00	10300	13300	15300	20300	25300	30300	40300
3.25	10325	13325	15325	20325	25325	30325	40325
3.50	10350	13350	15350	20350	25350	30350	40350
4.00	10400	13400	15400	20400	25400	30400	40400
5.00				20500		30500	40500
6.00				20600		30600	40600

diameter

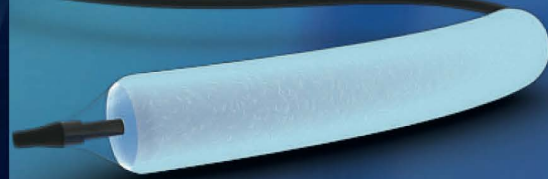
# ELUTAX "3"

## CORONARY

### THE DRUG ELUTING BALLOON TO REACH COMPLEX LESIONS

#### CORONARY RX

<b>Purpose:</b>	coronary
<b>Lesion location:</b>	coronary
<b>Tip:</b>	flexible, soft, 0,017"
<b>MAX Catheter profile:</b>	less than 1,0 mm
<b>Catheter design:</b>	RX
<b>Catheter material:</b>	Nylon
<b>Usable catheter length:</b>	Minimum 135 cm
<b>GW length:</b>	Recommended > 180 cm
<b>Max. recommended GW:</b>	0,014"
<b>Introducer sheath compatibility:</b>	4 F
<b>Guiding catheter compatibility:</b>	Minimum 5F
<b>Balloon characteristic:</b>	semi compliant
<b>Balloon nominal diameter:</b>	1,5-4,0 mm
<b>Balloon nominal length:</b>	10-40 mm
<b>Balloon coating:</b>	3D-Dextran-Paclitaxel Matrix
<b>Nr. of folds:</b>	3
<b>Crossing profile:</b>	less than 1 mm
<b>Inflation time minimal:</b>	10 sec
<b>Inflation time recommended:</b>	30 sec
<b>Nominal pressure:</b>	6 atm
<b>RBP:</b>	14 atm
<b>Need of predilatation:</b>	NO



The Dextran excipient enables a prolonged and more efficient drug uptake.

#### CORONARY RX

length							
mm	10	13	15	20	25	30	40
<b>1.50</b>	10150	13150	15150	20150	25150	30150	
<b>2.00</b>	10200	13200	15200	20200	25200	30200	40200
<b>2.25</b>	10225	13225	15225	20225	25225	30225	
<b>2.50</b>	10250	13250	15250	20250	25250	30250	40250
<b>2.75</b>	10275	13275	15275	20275	25275	30275	
<b>3.00</b>	10300	13300	15300	20300	25300	30300	40300
<b>3.50</b>	10350	13350	15350	20350	25350	30350	40350
<b>4.00</b>	10400	13400	15400	20400	25400	30400	40400

diameter

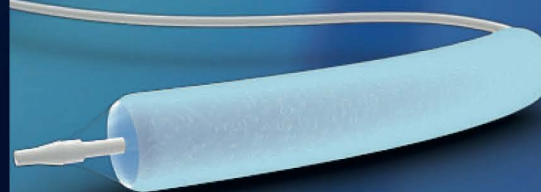
ORDER-CODE: ELUTAX "3"- RX-C-XXXX

# ELUTAX "3" DIALYSIS

HIGH PRESSURE CAPABILITIES  
AND SHORT SHAFT GIVES YOU  
SAFETY AND COMFORT

## FISTULA OTW

<b>Purpose:</b>	Fistula treatment
<b>Lesion location (if not to tortuous):</b>	Dialysis: AV Fistula
<b>Tip:</b>	flexible, soft, 0,017"
<b>MAX Catheter profile:</b>	less than 1,1 mm
<b>Catheter design:</b>	OTW
<b>Catheter material:</b>	Nylon
<b>Usable catheter length:</b>	Max 50 cm
<b>GW length:</b>	> 120 cm
<b>Max. recommended GW:</b>	0,018"
<b>Introducer sheath compatibility:</b>	5-6 F depending on diameter
<b>Balloon characteristic:</b>	semi compliant
<b>Balloon nominal diameter:</b>	4,0 - 7,0 mm
<b>Balloon nominal length:</b>	20-40-60 mm
<b>Balloon coating:</b>	3D-Dextran-Paclitaxel Matrix
<b>Nr. of folds:</b>	3
<b>Crossing profile:</b>	less than 1,1 mm
<b>Inflation time minimal:</b>	10 sec
<b>Inflation time recommended:</b>	30 sec
<b>Nominal pressure:</b>	6 atm
<b>RBP:</b>	18 atm
<b>Need of predilatation:</b>	NO



HIGH PRESSURE DRUG  
ELUTING BALLOON

## DIALYSIS

length				diameter
mm	20	40	60	
4.00	20400	40400	60400	
5.00	20500	40500	60500	
6.00	20600	40600	60600	
7.00	20700	40700	60700	

ORDER-CODE: ELUTAX "3"-OTWS-XXXXX



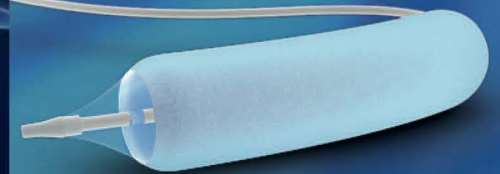
# ELUTAX "3"

## CENTRAL

NOW ALSO AVAILABLE WITH  
SHAFT LENGTH OF 90 CM

### CENTRAL

<b>Purpose:</b>	Central lesions: large arteries and veins
<b>Lesion location:</b>	aorta, v. cava, iliac, subclavian, jugular, axillaris, femoralis
<b>Tip:</b>	flexible, soft
<b>MAX Catheter profile:</b>	less than 1,3 mm
<b>Catheter design:</b>	OTW
<b>Catheter material:</b>	Pebax/Nylon
<b>Usable catheter length:</b>	130 cm and 90 cm
<b>GW length:</b>	> 300 cm
<b>Max. recommended GW:</b>	GW: 0,018"
<b>Introducer sheath compatibility:</b>	5-7 F depending on diameter
<b>Balloon characteristic:</b>	semi compliant
<b>Balloon nominal diameter:</b>	7, 8, 10, 12, 14 mm
<b>Balloon nominal length:</b>	20, 40, 60, 80 mm
<b>Balloon coating:</b>	3D-Dextran-Paclitaxel Matrix
<b>Nr. of folds:</b>	3
<b>Crossing profile:</b>	less than 1 mm
<b>Inflation time minimal:</b>	10 sec
<b>Inflation time recommended:</b>	15-30 sec
<b>Nominal pressure:</b>	6 atm
<b>RBP:</b>	10 atm
<b>Need of predilatation:</b>	NO



NOW IT IS POSSIBLE TO TREAT  
LARGE VESSELS WITH DCB

ORDER-CODE: ELUTAX"3"OTW-XXXXX  
Short Shaft : ELUTAX "3"-OTW-K

### CENTRAL

length				
mm	20	40	60	80
<b>7.00</b>	20700	40700	60700	80700
<b>8.00</b>	20800	40800	60800	80800
<b>10.00</b>	201000	401000	601000	801000
<b>12.00</b>	201200	401200	601200	801200
<b>14.00</b>	201400	401400	601400	801400

diameter

ELUTAX "3"

# PERIPHERAL OTW

THE DRUG ELUTING BALLOON TO REACH COMPLEX LESIONS

## PERIPHERAL OTW

<b>Purpose:</b>	Peripheral lesions
<b>Lesion location (if not to tortuous):</b>	femoral a., popliteal a., BTK. aa, plantar
<b>Tip:</b>	flexible, soft 0,017"
<b>MAX Catheter profile:</b>	less than 1,1 mm
<b>Catheter design:</b>	OTW, OTW-K, OTW-L
<b>Catheter material:</b>	Nylon
<b>Usable catheter length:</b>	Minimum 90 cm, 135 cm, 170 cm
<b>GW length:</b>	> 200, 300, 400 cm
<b>Max. recommended GW:</b>	0,018"
<b>Introducer sheath compatibility:</b>	4F
<b>Guiding catheter compatibility:</b>	6F
<b>Balloon characteristic:</b>	semi compliant
<b>Balloon nominal diameter:</b>	1,5-6,0 mm
<b>Balloon nominal length:</b>	10-250 mm
<b>Balloon coating:</b>	3D-Dextran-Paclitaxel Matrix
<b>Nr. of folds:</b>	3
<b>Crossing profile:</b>	less than 1 mm
<b>Inflation time minimal:</b>	10 sec
<b>Inflation time recommended:</b>	30 sec
<b>Nominal pressure:</b>	6 atm



## PERIPHERAL OTW

length													
mm	10	13	15	20	25	30	40	60	80	100	150	200	250
1.50	10150	13150	15150	20150	25150	30150							
2.00	10200	13200	15200	20200	25200	30200	40200	60200	80200	100200	150200	200200	250200
2.25	10225	13225	15225	20225	25225	30225							
2.50	10250	13250	15250	20250	25250	30250	40250	60250	80250	100250	150250	200250	250250
2.75	10275	13275	15275	20275	25275	30275							
3.00	10300	13300	15300	20300	25300	30300	40300	60300	80300	100300	150300	200300	250300
3.50	10350	13350	15350	20350	25350	30350	40350	60350	80350	100350	150350	200350	
4.00	10400	13400	15400	20400	25400	30400	40400	60400	80400	100400	150400	200400	
5.00				20500		30500	40500	60500	80500	100500	150500	200500	
6.00				20600		30600	40600	60600	80600	100600	150600	200600	

diameter

ORDER-CODE: ELUTAX"3"OTW- K-XXXXX

ORDER-CODE: ELUTAX"3"OTW-XXXXX

ORDER-CODE: ELUTAX"3"OTW- L-XXXXX

ELUTAX "3"

# PERIPHERAL RX

THE DRUG ELUTING BALLOON TO REACH COMPLEX LESIONS



## PERIPHERAL RX

<b>Purpose:</b>	Peripheral lesions
<b>Lesion location:</b>	femoral a., popliteal a., BTK. aa, plantar
<b>Tip:</b>	flexible, soft 0,017"
<b>MAX Catheter profile:</b>	less than 1,1 mm
<b>Catheter design:</b>	RX
<b>Catheter material:</b>	Nylon
<b>Usable catheter length:</b>	Minimum 135 cm
<b>GW length:</b>	Recommended > 180 cm
<b>Max. recommended GW:</b>	0,014"
<b>Introducer sheath compatibility:</b>	4F
<b>Guiding catheter compatibility:</b>	6F
<b>Balloon characteristic:</b>	semi compliant
<b>Balloon nominal diameter:</b>	1,5-6,0 mm
<b>Balloon nominal length:</b>	10-250 mm
<b>Balloon coating:</b>	3D-Dextran-Paclitaxel Matrix
<b>Nr. of folds:</b>	3
<b>Crossing profile:</b>	less than 1 mm
<b>Inflation time minimal:</b>	10 sec
<b>Inflation time recommended:</b>	30 sec
<b>Nominal pressure:</b>	6 atm
<b>RBP:</b>	14 atm
<b>Need of predilatation:</b>	NO

## PERIPHERAL RX

length													
mm	10	13	15	20	25	30	40	60	80	100	150	200	250
1.50	10150	13150	15150	20150	25150	30150							
2.00	10200	13200	15200	20200	25200	30200	40200	60200	80200	100200	150200	200200	250200
2.25	10225	13225	15225	20225	25225	30225							
2.50	10250	13250	15250	20250	25250	30250	40250	60250	80250	100250	150250	200250	250250
2.75	10275	13275	15275	20275	25275	30275							
3.00	10300	13300	15300	20300	25300	30300	40300	60300	80300	100300	150300	200300	250300
3.50	10350	13350	15350	20350	25350	30350	40350	60350	80350	100350	150350	200350	
4.00	10400	13400	15400	20400	25400	30400	40400	60400	80400	100400	150400	200400	
5.00				20500		30500	40500	60500	80500	100500	150500	200500	
6.00				20600		30600	40600	60600	80600	100600	150600	200600	

diameter

UNDISPUTED LENGTH

ORDER-CODE: ELUTAX "3"- RX-XXXXXX

INTERNATIONAL DISTRIBUTION: [INFO@ARBALTICMEDICAL.COM](mailto:INFO@ARBALTICMEDICAL.COM)

NEUROVASCULAR DIVISION: [NEURO@ARBALTICMEDICAL.COM](mailto:NEURO@ARBALTICMEDICAL.COM)

CARDIOVASCULAR DIVISION: [CARDIOVASCULAR@ARBALTICMEDICAL.COM](mailto:CARDIOVASCULAR@ARBALTICMEDICAL.COM)

REGULATORY: [REGULATORY@ARBALTICMEDICAL.COM](mailto:REGULATORY@ARBALTICMEDICAL.COM)

ORDER: [ORDER@ARBALTICMEDICAL.COM](mailto:ORDER@ARBALTICMEDICAL.COM)



## AR Baltic Medical

AR Baltic Medical UAB

P.Luksio g. 5B

LT-08221 Vilnius

Lithuania

Hotline

24/7/365

**+33 6 21273746**

<http://www.arbalticmedical.com/>

rev. 2020.09.01